



4TH LOUISIANA BIENNIAL:

NATIONAL
JURIED
EXHIBITION

January 26 - February 16, 2017

Juror: Rachel Cook
Curator of DiverseWorks
Houston, TX



School of Design
Louisiana Tech University
design.latech.edu

About the Biennial

The Louisiana Biennial is the School of Design's fourth national juried exhibition. This is a multi-media show for two and three-dimensional works, as well as video and installation works exploring any theme. Through a nationally advertised call for entries The School of Design received over 175 artist submissions and a total of over 800 artworks from across the United States. The overwhelming response reflects a continued commitment and passion for the arts in our communities. We hope that the exhibition not only highlights regional artists, but also exposes all of us to contemporary works created around the country.

Juror: Rachel Cook

Curator at DiverseWorks
Houston, TX



Rachel Cook is a Curator at DiverseWorks in Houston. Her curatorial work reconsiders the relationship between images and objects, and investigates gestural language and methods of delegation embedded within performative and participatory work. While at DiverseWorks, she organized commissioned projects by Keren Cytter, Danielle Dean, Tony Feher, Oliver Herring, Chelsea Knight, Liz Magic Laser, Kristin Lucas, Pepe Mar, Heather and Ivan Morison, Sheila Pepe, Sondra Perry, Mark Tribe, and Wu-Tsang.

Recently she has curated a group exhibition and performance piece conceived by French artist Julien Prévieux, *What Shall We Do Next?*, which considered ideas of the real in relation to physical materials, technology, and advertising. Another recent project was *The School for the Movement of the Technicolor People*, a large-scale performance platform by Los Angeles-based artist taisha paggett in collaboration with Ashley Hunt and Kim Zumpfe, where the question, “What is a Black dance curriculum today?” was posed. Her writing has appeared in a number of art journals, including *Modern Painters*, *Flash Art*, and *Prospect 3*'s catalog. She is currently the Guest Editor of *Art Lies for Gulf Coast*, a journal of literature and fine arts.

Prior to joining DiverseWorks, Cook worked for dOCUMENTA(13)'s publication team, and was a fellow for the International Studio & Curatorial Program in New York. Cook holds a MA from the Center for Curatorial Studies at Bard College and a BFA from the San Francisco Art Institute. Last year she received a Curatorial Fellowship from The Andy Warhol Foundation for the Visual Arts to research a series of Walker Evans' photographs from the African Negro Art exhibition at MoMA in 1935.



Between Here and Now, 2016

DEIRDRE ARGYLE

There is a tremendous amount of poetic beauty in our uncertain lives. I create objects that pose questions about our comfort with uncertainty. How do we reconcile the uncertain with the certain and find comfort in knowing that we are part of a much greater cycle? How do we respond to uncertainty? How can we see beauty in uncertainty? If we recognize our own mortality will we live a more meaningful life?

Sometimes my work appears in the form of an autonomous machine. The works are scaled to me, and function as self-portraits. Most recently I have started a series of work that poses questions about how we grieve loss, connect with the reality of it, and still look for a moment to laugh and find solace.

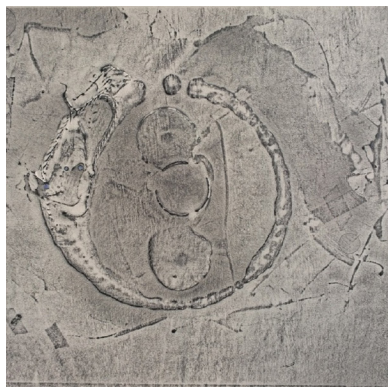


Exurban: Yard Cubes, 2015

LETICIA BAJUYO

Leticia Bajuyo is a sculptor who uses namable, seemingly neutral, commonplace icons and objects to animate theatrical re-arbitrations of value. Her sculptures and installations have been exhibited nationally including large-scale public art installations in the ceiling of the entrance of the Tony Hillerman Library in Albuquerque, New Mexico; the entrance of the Indiana State Museum in Indianapolis; the Lyon Square outdoor plaza in Grand Rapids, Michigan during ArtPrize 8; and the three story atrium of the South Bend Museum of Art, Indiana. Recent international exhibitions include FRAME OF MIND 2016, a Northern Mindanao Contemporary Art exhibit in Mindanao, Philippines and the 2015 IV International From Waste to Art Exhibition at the From Waste to Art Museum in Baku, Azerbaijan.

Upcoming projects include a ceiling suspended installation in Concourse C of the Nashville International Airport and solo exhibitions at ATHICA in Athens, Georgia and Texas A&M University in Commerce, Texas.

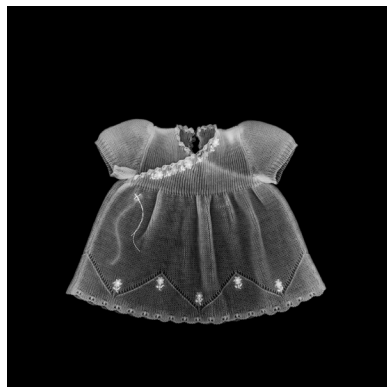


Blue Surge, 2016

WIN BRUHL

Win Bruhl is a studio artist and retired art administrator who taught for various universities during a forty-three year career following the completion of the Master of Fine Arts degree in printmaking and sculpture at Montana State University. In addition to studio art, an interest in pre-conquest cultures of Mesoamerica resulted in numerous study trips to ancient cultural sites and contemporary artisan centers in Mexico. These trips were accompanied by students.

In addition to being included in more than two-hundred professional exhibitions in the United States, multiple fine art prints and drawings have been shown in Germany, The Netherlands, The Czech Republic, Mexico, and the former Soviet Union.



Matrilinear #5, 2016

ELIZABETH CLAFFEY

Elizabeth M. Claffey is an Assistant Professor of Photography at Indiana University in Bloomington. She is an honors graduate of Earlham College and has an MFA in photography from Texas Woman's University, where she also earned a Graduate Certificate in Women's Studies. She received a 2012-13 William J. Fulbright Fellowship, which she used to support her documentary and creative research in Eastern Europe.

Elizabeth's work focuses on the way personal and familial narratives are shaped by interactions with both domestic and institutional structures and spaces. Her work has been recognized by PDN Magazine, Project Basho Gallery, Abecedarian Gallery, The Eddie Adams Workshop, and various other galleries and publications including The Chronicle of Higher Education, The Dallas Morning News, and The Kinsey Institute.



Praise, 2016

JONATHAN CLAYTON

Jonathan Clayton is a MFA Candidate at Louisiana Tech University. He has spent the past twelve years in China working as an English teacher and exploring the country making images of life in China. Upon returning to the United States he returned to school in order to pursue a degree in photography.

His body of work has been exhibited in galleries across America as well as published in *Creative Quarterly*. In April 2016 he began documenting life in small town Cheneyville, Louisiana. With a population of around 500 individuals, Cheneyville is a small American town resembling many others in America that is slowly dying as the agrarian economy shifts to a smaller workforce and staple crops are replaced with cash crops. Jonathan seeks to document life there, one that shifting economies leave behind.



A Certain Uncertainty, 2015

AARON COLLIER

Aaron Collier is a visual artist living in New Orleans. He teaches painting and drawing at Tulane University as an Assistant Professor. Solo exhibitions of his work have occurred at Cole Pratt Gallery and Staple Goods, an artist cooperative in the St. Claude Avenue Arts District. He has participated in recent group exhibitions at the Contemporary Arts Center and the Ogden Museum of Southern Art and has been featured in *New American Paintings*.

Aaron's paintings are represented in such collections as the New Orleans Museum of Art, Iberia Bank, and the Boston Medical Center. He has been awarded artist residencies by the Ragdale Foundation, the Virginia Center for the Creative Arts, the Joan Mitchell Center in New Orleans, and ISCP in Brooklyn, NY.



Windswept (Ohio Field), 2015

ANITA COOKE

Anita Cooke has lived and worked as an artist and teacher in New Orleans since 1980. She received her BFA in Ceramics from Kent State University in Ohio in 1978 and her MFA in Ceramics and Sculpture at Newcomb College/Tulane University in New Orleans in 1984. She has taught Ceramics at Tulane University, Loyola University (in New Orleans), Stephen F. Austin State University in Nacogdoches, Texas, at Western Michigan University in Kalamazoo, Michigan and out of her own studio in New Orleans. Her twenty-eight foot long ceramic mural entitled “Lightsounds” can be seen on the campus of Western Michigan University.

In 2005 Anita was a recipient of a Louisiana Fellowship Award. She is currently working with sewing and fabric, mixed media and collage. Her works are in numerous private collections and can be seen locally at Jonathan Ferrara Gallery.



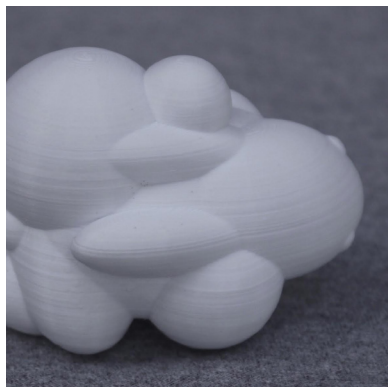
10th Wave, 2015

KERSTIN DALE

Kerstin Dale’s current work is based on her concern for the ecological changes in the Grand Canyon and the Colorado River, versus the population growth of the desert southwest.

Water—its absence or presence, its memory—is the prominent feature in her artwork. She aims to elevate the role of water, by using her art practice to highlight the utterly essential nature of water, pay homage to the gift of water, and to mourn its loss.

Her exhibition record includes exhibitions at Conrad Wilde Gallery, Tucson Art Museum, and Prescott College Art Gallery. Her work has been supported by a Contemporary Forum Grant from the Phoenix Art Museum. Kerstin received her BFA from the University of Arizona, and her MFA from The School of the Art Institute of Chicago.



Pocket Cloud #5, 2016

NICK DAVIS (THE SCHOOL OF POETIC LIVING)

The School of Poetic Living was originally conceived as a conceptual art project, it has since moved out of the realm of concept and into the realm of practice. The School of Poetic Living is not about making art nor is it an actual school. The School of Poetic Living is a school of thought. The School of Poetic Living was created to encourage purposeful living. It was created to help people find the poetry in their own lives and appreciate the small moments in life as well as the grand.

More information can be found at: **theschoolofpoeticliving.wordpress.com**



Tip of the Tongue, 2016

WILLIAM DEPAUW

DePauw received his BFA in Painting from Northern Michigan University and his MFA in Ceramics from Tulane University in 2004. He has held the position of Professor of Practice and Ceramics Lab Tech since 2006.

Primarily occupied with making objects, DePauw is interested in the visual references embodied in physical form. He investigates the broad range of associations in an objects visual presence. Employing various arrangement and presentation strategies with these objects, Depauw investigates the subjective content that resonates with particular relationships and various juxtapositions.

DePauw is a member of The Staple Goods Artist's Collective in the St. Roch Neighborhood, New Orleans.



*00_Spelling the Wind_excerpt
Document, 2016*

CRAIG DONGOSKI

Craig Dongoski is an artist living and working in Atlanta since June 1999. He has taught painting and drawing full-time at Georgia State University becoming a permanent faculty member in fall 2001. During the summer of 2001, he presented a fragment of a film and soundtrack he is involved in making, titled *The Wisdom Connected with Children Freezing to Death*. This film was shown at the Raymond Lawrence Gallery in Atlanta during the month of August 2001.

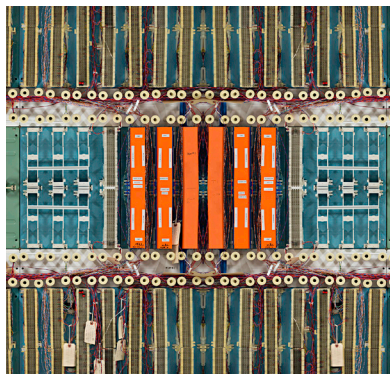
Prior to his move to Atlanta, Dongoski had lived and worked in Boston since 1991 where he was on the permanent faculty at the School of the Museum of Fine Arts. He has been very active in exhibiting in the United States and in Europe. Further involvements include organising outreach programs such as the International Print Symposium in Boston and co-curating a major exhibition and print exchange for the First Africus Biennial in Johannesburg, South Africa. Dongoski's work is a continuous and ongoing exploration of the self.



Fabrication, 2013

ANNIE DONOVAN

Annie Donovan is an interdisciplinary artist based in the southeast, focusing her attention on personal experiences and the environment. Originating from DFW, she received her Bachelor of Fine Arts from UT Arlington and her Master of Fine Arts from Florida State University. Her work has been exhibited internationally and has been featured in various publications such as *LENSCRATCH* and the *Oxford American Magazine*. Annie currently resides in TLH where she enjoys camping, hiking, gardening, hanging with her cat, flying free with her pet pigeons, and exploring the globe with her camera at her side.

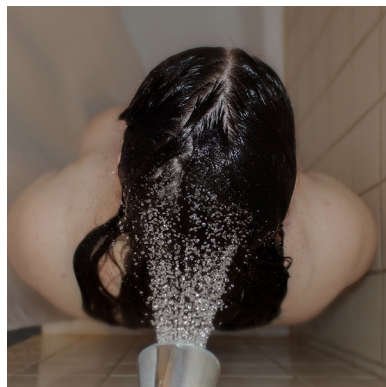


Hardware Mirror 10 (Dial-Up), 2015

ANNELAURIE ERICKSON

AnnieLaurie Erickson is a lens-based artist and educator residing in New Orleans, Louisiana. She is the Ellsworth Woodward Junior Professor in Studio Art and the Director of Photography in the Newcomb Art Department at Tulane University. She is also a gallery collective member at Antenna in the St. Claude Arts District in New Orleans.

Erickson has recently exhibited her work at Higher Pictures, New York, NY; the Goethe-Institut, Washington, DC; the Los Angeles Center for Digital Art; Newspace Center for Photography, Portland, OR; the Ogden Museum of Southern Art; the Elizabeth Foundation for the Arts, New York, NY; the Boston Center for the Arts; and CentrePasquArt, Bienne, Switzerland. Her work has been written about in The Huffington Post, Daily Serving, Feature Shoot, Lenscratch, Pelican Bomb and Afterimage. She holds an MFA from the School of the Art Institute of Chicago and a BFA from the Rhode Island School of Design.

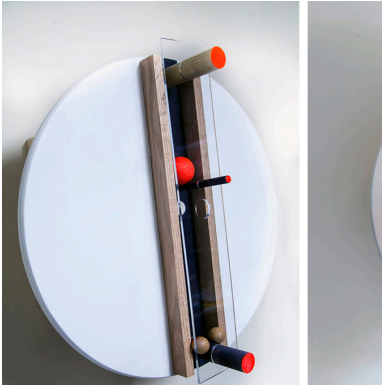


Baptism, 2014

ASHLEY FEAGIN

Ashley Feagin explores ways of building stories through photographs, installations, performances and collaborations. Feagin's work is featured in several books published by Vermont Photography Workplace: "Poetic Objects: Still Life As Subject," "Home... is Where the Camera Is", and "Redefining the Self Portrait". Her work is also featured in the traveling group exhibition; "Spinning Yarns: Photographic Storytellers". Feagin has presented lectures for Society for Photographic Education at both their regional and national conferences.

Feagin received her BA in Photography from McNeese State University in Lake Charles, Louisiana in 2009 and received her MFA at Louisiana Tech University in Ruston, Louisiana in the spring of 2012. She is currently an Assistant Professor of Art at Albion College in Albion, Michigan.



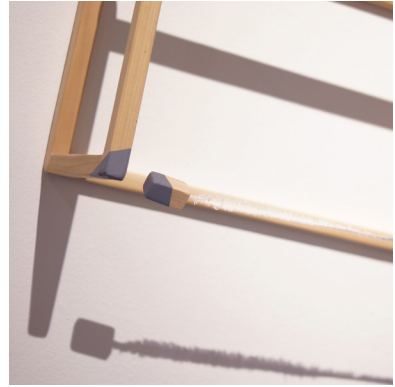
Etude 1 (part of Symphonic Infinitum), 2015

SHERMAN FINCH

Sherman Finch is a multi-media artist who works in both traditional, digital, and hybrid media, with a special emphasis in the area of creative interaction, sonification, and contemporary art. Using a variety of tools, media, and approaches, his work involves deconstruction and recontextualizing forms as well as images to create new meaning and challenge the viewer to reconsider traditional conventions about the visual experience. Some themes that run through his work are human behavior, the origin of thought, nature and the environment, and the study of art itself.

During his education, he received a BFA in Painting from the Rhode Island School of Design and two Master's degrees from the Maryland Institute, College of Art: a MFA in Painting and an MA in Digital Arts.

He is a member of the collaborative group, The AKA Collective, co-founder of the LIVELab, and an Assistant Professor in the Department of Visualization at Texas A&M.



Pull, 2015

MEGHAN GRUBB

Meghan Grubb makes works of sculpture and installation that explore the non-rational and intuitive responses of wonder and anxiety. Her practice generates new questions and strategies on interrupting the built environment, bending our expectations of physical space, and creating opportunities for psychological and conceptual vertigo. Grubb intends to leverage the unease in the relationship between humans and the physical spaces we inhabit, making work that may prove at once playfully reassuring and profoundly disquieting.

Meghan Grubb received her M.F.A. Art + Design from the University of Michigan in 2012, and her B.A. History + Studio Art from Wellesley College in 2005.

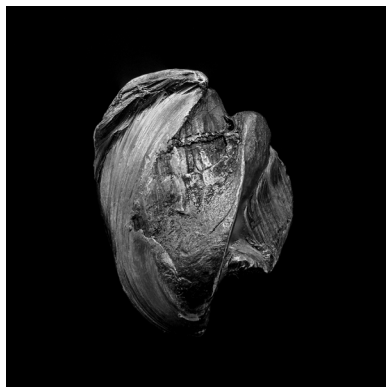


Double Breasted Hat, 2014

LESLIE GREGORY GRUESBECK

My work often begins with play. Play with ideas, with words, with imagery, with materials. I love to engage with the materials and watch what happens—to allow the physical nature of the material to indicate some of the direction of the work. I have a sort of dialogue with the materials, much like children playing with each other. There's some give and take—we, the materials and I, make the story together. This approach most often gives me a sense of satisfaction and joy that I hope is conveyed to the viewer.

Leslie Gregory Gruesbeck is an Associate Professor of Art at Northwestern State University of Louisiana and also serves as Gallery Coordinator for the Dear School of Creative and Performing Arts, at NSULA.



Bullet #1, 2016

GARRETT HANSEN

Garrett graduated from Grinnell College, where he studied economics and political science. He completed his MFA in photography at Indiana University and has taught at several universities in the United States and in Asia; he is now an Assistant Professor of Photography at the University of Kentucky. Garrett has had numerous solo and group exhibitions in the United States, Europe, Indonesia, and Japan.

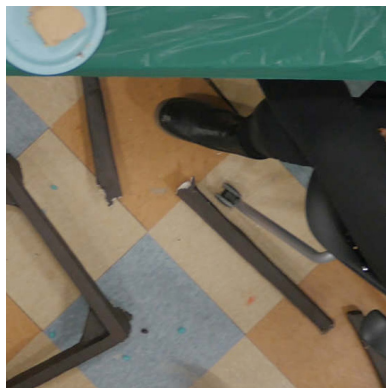


2016.08.810.05d, 2016

CAMDEN HARDY

Camden Hardy is a visual artist who designs and carries out activities that explore the process by which human beings develop relationships with their surroundings. He records these events, as well as their outcomes, with photographic processes to encourage contemplation and dialog about our place in the universe.

In 2010 he founded *The Postcard Collective*, an international collaborative art project bringing creative minds together through seasonal postcard exchanges. Camden is a Core Faculty member at Southwest University of Visual Arts in Tucson, Arizona.



Chapter Three: Flush Pink, 2016

SHANA HOEHN

Born in Texarkana, Texas, 1991

Shana Hoehn creates videos that are informed by the implicit order and decorum inside spaces that imply a form of social regulation.

Hoehn is currently a CORE Fellow at the Museum of Fine Arts Houston and has participated in residencies such as Skowhegan School of Painting and Sculpture, Acre Residency, and SOMA Summer. Hoehn was also a recipient of a Fulbright Research Fellowship in Mexico in 2013 and an Elizabeth Greenshields grant in 2015. She received her BFA in Painting from Maryland Institute College of Art and her MFA in Sculpture and Extended Media at Virginia Commonwealth University.



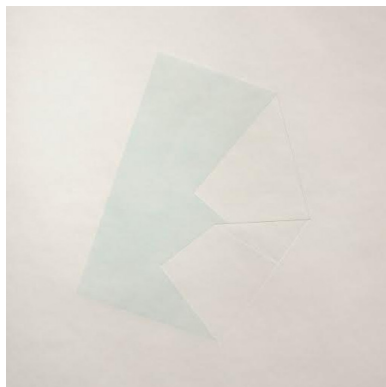
Los Menores (The Minors) - Dominican Republic, 2014

KEVIN B. JONES

Kevin Bernard Jones was born and raised in the community of South Central Los Angeles, California. Introduced to photography at a young age, on Sunday family trips to the Los Angeles County Museum, he was given an opportunity to use the family Polaroid camera. These early experiences set the seed for his life-long passion for photography.

Primarily self-taught, he focuses his camera on the communities and places in the world that are less traveled. Kevin's travels and photographic interests include Latin America, the Caribbean, Africa and the southern region of the United States. He reaches out to connect to people, and to capture images that include those of the African Diaspora, which he is a part of.

Kevin finds great personal satisfaction working with non-governmental organizations (NGOs) who support local community initiatives. He has worked with organizations based in Haiti, La República Dominicana and the United States.

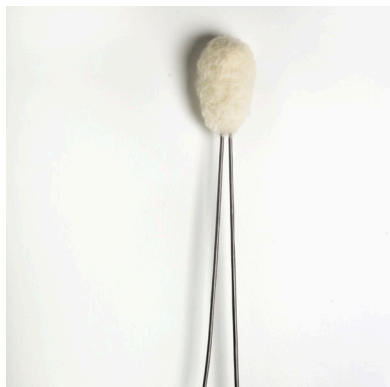


Traces 2, 2016

TRESSA JONES

Tressa Jones was born and raised in the Boston Area and completed her BS at the University of Massachusetts. After studying fine art and printmaking at the School of the Museum of Fine Arts, Boston and at New Mexico Highlands University in Las Vegas, NM she relocated to Missoula, Montana to pursue a MFA in Studio Art at the University of Montana, which she completed in 2016. Tressa has held positions as Co-Director for FrontierSpace Alternative Art Space in Missoula, MT and Instructor at the Missoula Art Museum.

Her artistic practice and research investigate how time and memory are experienced through the body, landscape, and built environments. Jones's work has been shown nationally and internationally; in July of 2016 she was a resident artist at Art House Messen in Ålvik, Norway. Tressa currently resides in Lawrence, Kansas where she is the 2016-17 Printmaking Artist-in-Residence at the Lawrence Arts Center.



Feeler, 2012

KEVIN KENNEDY

Kevin Kennedy has been making photographs, sculptures and drawings for the past twenty-five years. He has served on the faculty at the University of Illinois in Champaign-Urbana, the Penland School of Crafts in North Carolina, Louisiana Tech University in Ruston and Centenary College in Shreveport, Louisiana.

His work has received support through grants from the Louisiana Endowment for the Humanities, Louisiana Tech University and the Louisiana Division of the Arts. He was the recipient of the Louisiana Division of the Arts Individual Arts Fellowship Award in 1997 and 2007. Recent artist residency fellowships include the Edward F. Albee Foundation in Montauk, New York and the Ucross Foundation in Wyoming. His work is represented by Hodges Taylor Gallery in Charlotte, North Carolina. He currently lives in Shreveport with his wife and daughter.



Déjà Vu Deluge, 2016

JASPER LEE

Jasper Lee is a mixed-media artist and composer from central Alabama. His work utilizes a poetic approach to exploring texture, sound and color across the mediums of video, installation and music. He has recorded scores for several feature films and has performed nationally, including appearances at Bard College, the University of Alabama's Sonic Frontiers Series, the Improvisor Festival, the MSPS New Music Festival in Shreveport, the International Noise Conference and San Francisco's Asian Art Museum.

Lee was an artist in residence at Elsewhere Museum in 2014 and received a grant from the Alabama State Council on the Arts in 2015. In 2016, he began a series of art-music releases under the project title Sweet Wreath.



Window Gazes, 2016

ANDY MATTERN

Andy Mattern (Stillwater, OK) is an Assistant Professor of Photography & Digital Media at Oklahoma State University. His work has been exhibited at Elizabeth Houston Gallery in New York, Silver Eye Center for Photography in Pittsburgh, The Luminary in St. Louis, The Center for Contemporary Arts in Santa Fe, the Lawndale Art Center in Houston, Candela Gallery in Richmond, Virginia, and the Photographic Centre Peri in Turku, Finland.

Mattern has received awards for his work including the Artist Initiative Grant from the Minnesota State Arts Board, the Printing Fellowship from Photo Center NW in Seattle, and the triennial Art365 Grant from the Oklahoma Visual Arts Coalition. His work is included in the collections of Photo Center North West, BMO Harris Bank, and the Tweed Museum of Art. He holds an MFA in Photography from the University of Minnesota and a BFA in Studio Art from the University of New Mexico.

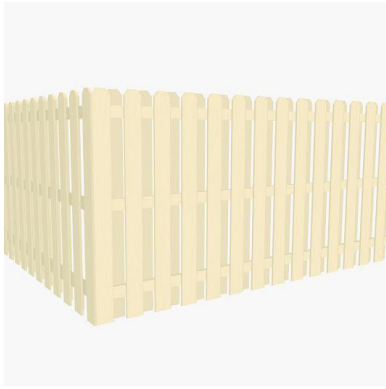


Then suddenly knowing, 2015

GEOFFREY MILLER

Son of a physicist and an English as a Second Language teacher, Geoffrey Owen Miller is interested in multi-stable perception, iconography, and semiotics.

Geoffrey Owen Miller was born in Los Alamos, New Mexico, and currently lives and works in Brooklyn. He holds an MFA in painting from the University of Massachusetts Amherst, and a BFA from the University of California Long Beach. He has shown nationally in New York, Newark, Los Angeles, Chicago, Boston and Durham and internationally in Seoul, Berlin, and Sao Tome. Miller has taught at the Maryland Institute College of Art, the University of Massachusetts Amherst, the Korean University of the Arts (K'Arts) in Seoul, and Marymount Manhattan College.



Fence #2, 2015

SEAN P. MORRISSEY

Sean P. Morrissey was born and raised on the Ohio / Pennsylvania border. He holds an M.F.A. in Studio Art from The University of Nebraska-Lincoln and a B.F.A. in Studio Art: Two-Dimensional Studies from Bowling Green State University.

His current research focuses on the contemporary American landscape dealing with land use, identity, and consumerism. Sean utilizes traditional and non-traditional techniques to create works on paper and large-scale paperworks.

His work has been exhibited nationally and internationally at places such as the International Print Center New York, Bemis Center for Contemporary Art, The Joel and Lila Harnett Museum of Art, Dedalo Center for Contemporary Art (Italy), and the Biennale Internationale d'estampe contemporaine de Trois-Rivières (Québec). His work is included in several permanent and private collections, such as the New York Public Library, The Sheldon Museum of Art, and The Weisman Art Museum.



Dog Mouse, 2013

JOSEPH MOUGEL

In *Dog Mouse*, I stand like a prairie dog by its burrow, watching the sky. Digging the hole is a meditation on the act of creating nothing, as the hole is always filled in again in the end.

During my service in the US Marine Corps, I dug holes, or, more accurately, 'moved' holes, with dirt from the hole at the new site filling the original void and its grass returfing the original lawn. These early landscape interventions continue to inform my practice as an established artist, but I now contextualize the work within a discourse of manual labor, land use, and tactics for deciphering space and time (on a human scale). My creative research spans genres of performance, video, and photography, while engaging with topics of site specificity through a field-based practice.



Lake_Newton02, 2016

LAKE NEWTON

Lake Roberson Newton currently lives and works in Baltimore, Maryland. He has exhibited his work both nationally and internationally, participating in recent exhibits at Florida State University, the Ogden Museum of Southern Art, the Alexandria Museum of Art, the Masur Museum of Art and the University of Alabama.

The work he is presenting for the Louisiana Biennial is part of a larger series titled "On the Surface." The photographs in this series reveal both identifiable and transformed pieces of everyday life. They are a deliberate attempt to subvert a piece of the physical world and transform it into a kind of visual language that both reflects and denies the represented forms.



Great Hospitality: An Expression of Friendliness, 2016

KRISTIN POWERS NOWLIN

Kristin Powers Nowlin received her BFA from Columbus College of Art and Design in Ohio and her MFA in Printmaking from Ohio University in Athens.

She has previously taught at many colleges and universities across the country, including Southeast Missouri State University, Adams State College, and Clarion University of Pennsylvania, where she was an Associate Professor of Printmaking. Currently, she works full-time on her artwork and teaches part-time at Kansas State University in Manhattan, Kansas. Kristin has received a Pennsylvania Council on the Arts Individual Artist Fellowship and has been an artist-in-residence at the Lux Center for the Arts in Lincoln, Nebraska and Central Wyoming College in Riverton. In addition, she was recently a Visiting Artist at Lawrence University in Appleton, Wisconsin and at Wichita State University in Kansas. Over the course of her career, Kristin's work has been exhibited in over 200 solo, juried, and group exhibitions across the country.



Hannah, 2016

STEPHANIE PALAZEKE

Stephanie Palazeke is a video artist based in Albany, New York. Her work deals with how societal expectations shape or restrict women. Influences include Mary Reid Kelley, Kate Gilmore, and Eleanor Antin, as well as Christianity, Feminism, and science fiction. Palazeke also works as a part of MooseChat Arts, a collaborative video art team. She received her Bachelor of Science in Art Education at The College of Saint Rose in May 2014. She is an MFA candidate at the State University at Albany, completing her program in Studio Art in May 2017. She has recently exhibited at Albany Center Gallery, the Knockdown Center, The Hyde Collection, the Lower Adirondack Regional Arts Center, and the New York State Museum.



The Archive, 2013

VESNA PAVLOVIC

From “Fabrics of Socialism” series. “Fabrics of Socialism” is a photographic project based on an archive of images of the Museum of Yugoslav History in Belgrade, Serbia.

The archive is the visual record of Yugoslav president Josip Broz Tito’s career and his travels around former Yugoslavia and the world. It represents a psychological portrait of an era, burdened with photographic representation of socialist propaganda.

This project examines the role of spectacle in state ideology through the lens of photographic representation. Personal and individual experience is juxtaposed with the collective representations of the national unity. The work frames and questions the monumentality of the socialist visions in a country, which witnessed a decade of wars soon after the president died.



Time Machine, 2016

JEFF RINEHART

My name is Jeffrey Rinehart and I am an artist and instructor based in the city of New Orleans. I am the director of the Ten Gallery in New Orleans which is a collective run space focused on emerging artists and have been teaching digital art at the University of New Orleans since 2008.

My studio practice allows me to create work that explored theoretical ideas about image making using digital and traditional forms of image manipulation in large format photography and 3D printing. I consider the way we engage the objects we photograph and so I began experimenting by flipping the relationship and printing objects in ways that mimic my current image making process. The object in this exhibition has been created by a 3D gypsum printer. The images are layered 3D mesh's that create exaggerated objects that play with the relationship of formal integration and distorted context.



Glow, 2015

JUDITH ROW

I have been involved with fiber arts and crafts since the 1960's, first for practical reasons and then because I so thoroughly enjoyed working with fibers and found my perfect creative outlet. I have had a commission-based weaving business, a women and children's clothing business and always a sculptural fiber component to my work. My fiber pieces have been in shown at galleries in Colorado, Illinois, Louisiana, Maryland, Minnesota, New Jersey, Pennsylvania, Texas and Washington.



KOKO's Love: Episode 2, 2016

YOSHIE SAKAI

Lives and works in Los Angeles, California

Yoshie is a multidisciplinary artist (video, sculpture, and installation) whose work creates an uneasy environment that embodies her love-hate relationship with pop culture, as she uses humor to tackle anxiety about defining herself positively within the idealistic world created by the mass media. More recently, her work challenges the myth of the “model minority” to reveal the complexities that lie underneath the guise of superficial “perfection” of being both Asian-American and a woman in society.

She attended the Skowhegan School of Painting and Sculpture in 2014 and received the 2012 California Community Foundation for Visual Artists Emerging Artist Fellowship. Her work has been shown throughout the United States in film festivals and art exhibitions, as well as internationally in Canada, Cambodia, and Japan. She received her BFA from California State University Long Beach and her MFA from Claremont Graduate University. Yoshie had her first solo exhibition this past summer at Antenna in New Orleans, Louisiana.



Targeted, 2016

VITUS SHELL

Vitus Shell's paintings encompass a depth and intensity usually displayed in the work of artists far past his age. While a student at MCA, the Monroe, La., native traveled and learned more about different cultures and art forms. He attended the National Black Fine Arts Show in 1999 for the first time and received a first hand view of the inner workings of the art world. Other artists he met while at MCA who have continuously inspired him include Brenda Joysmith, George Hunt, and Alonzo Davis.

To date, he has accumulated an impressive list of achievements, some of which include: participating in exhibits at universities, museums, and private galleries across the country; painting a mural for the National Civil Rights Museum's NBA Pioneers exhibit; and being commissioned to do public art by the Memphis UrbanArt Commission. Opportunities for Shell continue to arise for him and he leaves himself open to all they have to offer. He is humble about his bright future, yet poised to become of the greatest artistic “voices” of his generation.

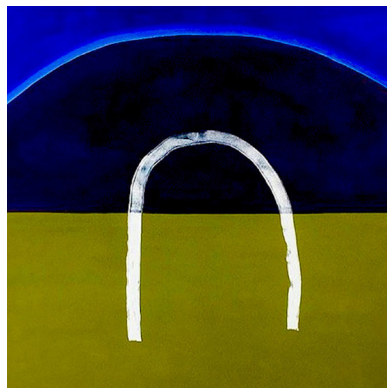


Iterations, 2016

JEREMY SPEED SCHWARTZ

'Iterations' is an abstract iterative loop with changing timeframes that overlap and affect each other across these loops, culminating in an 8-second loop that retains the flowing qualities associated with straight-ahead full animation with a complexity of movement impossible to achieve through a standard straight-ahead technique.

The piece was inspired by the work and techniques of Adam K. Beckett, an undisputed master of optical printing whose works ('Sausage City', 'Dear Janice') utilize single iterative loops. The process for animation was straight ahead from the first frame to the last, working on a single layer, adding to and erasing from the previous loops. Later animation partially destroys earlier sequences, and the final images are so complex that individual objects and lines can no longer be completely followed.



Relic, 2016

ADRIANNA SPEER

Adrianna Speer is an artist, educator, and gallery director living in Ruston, Louisiana with her dog Bubbie. Adrianna received her BFA from Louisiana State University in Painting and Drawing and is currently pursuing her MFA at Louisiana Tech University in Studio Art.

Speer was awarded a Graduate Teaching Assistantship in 2014 and is an Instructor of Record teaching at Louisiana Tech University. She recently taught Foundations Art at Belvoir Terrace, an all-girls performing arts camp in Lenox, MA in 2016. Speer's work has been exhibited nationally in venues such as Site:Brooklyn in Brooklyn, NY, Verum Ultimum Gallery, in Portland, OR. In 2013, she attended the Artist in Residence Program at Burren College of Art, in Ballyvaughan, Ireland, and the Artist in Residence Program at Atelier de la Rose, in Montcabrier, France. Adrianna is the Gallery Director of Studio 301, a contemporary art gallery in downtown Ruston, LA.

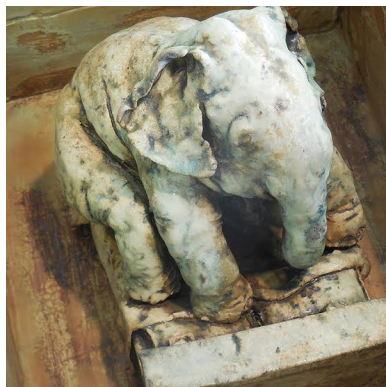


Ottoman, 2016

MORGAN STEPHENSON

I initiate the experience of nostalgic shock through juxtaposing overwhelming pattern and color with objects and places that are familiar. Attending Indiana University will allow me to further develop my photographic style with the guidance of its diverse faculty as well as challenge me with an unfamiliar landscape to provide my work with new context.

When walking through the homes of estate sales, I seek flamboyant colors, eccentric patterns, and recognizable objects that suspend me in state of memory. To emphasize each object's emotive qualities, I arrange scenes that combine each object with color and pattern to provoke an emotional response. Each composition is intentionally created to form a descriptive representation of time, place, and memory.



Dead Weight, 2016

DIANA SYNATSKA

Diana obtained her undergraduate degree through Tarleton State University where she obtained a BA in art and a secondary teaching certification in 2001. She taught K-12 grade at Happy Hill Farm Academy (treatment facility for at-risk students) in Glen Rose, Texas. As the art director, Diana provided a beneficial source of expression for these students. During this time she obtained a Masters of Art Education degree from Texas Tech University through a program developed for working teachers. Her body of work was through ceramics, both functional and sculptural. Diana graduated from Texas Tech University in the summer of 2010 and immediately was accepted into the Master of Fine Arts program at Louisiana Tech University where she was granted the Teaching Assistantship Scholarship. Diana achieved an MFA in 3D Studio from Louisiana Tech University in May of 2013. She owns and operates Curly Tail Panther Studio where she teaches classes and continues with her own work. Diana is represented by Cole Pratt Gallery in New Orleans, Louisiana



Conewango, 2015

CHRIS TAYLOR

Chris Boyd Taylor was born and raised in the suburbs of Columbus Ohio graduating with fine arts degrees from The Ohio State University and Alfred University. He has exhibited both nationally and internationally, with two major public art commissions Remolcador en Camino at the Pablo Neruda Plaza, Montevideo Uruguay and The Cardboard Kids at Austin Peay State University, Clarksville Tennessee. Additionally, he was an Emerging Art Fellow at Socrates Sculpture Park in Queens New York where he installed Conewango.



Difficult Things Cannot be Unseen (K.T.), 2015

KRISTINE THOMPSON

Kristine Thompson received her M.F.A. in Studio Art from the University of California, Irvine and an undergraduate degree from Northwestern University. She is currently an Assistant Professor in the School of Art at Louisiana State University. Her work often addresses social and emotional responses to death and memorial practices and how we respond to photographic depictions of loss. Her work has recently been shown at Commonwealth & Council in Los Angeles, School 33 Art Center in Baltimore, the Luckman Gallery at Cal-State LA, and Schalter, Berlin. She is the recipient of a D.A.A.D. fellowship in the arts and a grant from the Center for Cultural Innovation.



Sign Language: Hooray Heart, 2016

AMELIA TOELKE

Amelia Toelke's diverse art practice draws on her training in jewelry and metalsmithing yet transcends traditional disciplinary boundaries. A combination of sculpture, collage, and installation, Toelke's work caresses the intersection of the two-dimensional and the three-dimensional, and challenges given conceptions of object, image, reality, and representation. Through a balance of excess and restraint, her work integrates process, content, and material to create a sensorial experience that invokes our shared humanity.



Zebra Print, 2012

SAMANTHA VANDEMAN

Samantha VanDeman is a photographer born in Chicago, IL and based in Lake Charles, LA.

She has an MFA in Photography from the Art Institute of Boston at Lesley University (2009) and a BFA in Fine Arts from Columbia College Chicago (2005).

Samantha has been exhibited and published internationally. Her work has been exhibited at Photo Lux Festival, Lucca, Italy; CPW, Woodstock, NY; The Center for Fine Art Photography, Fort Collins, CO; Griffin Museum of Photography, Winchester, MA; Newspace Center for Photography, Portland, OR; Hubbard Street Lofts, Chicago, IL; Finch and Ada, New York, NY; Philadelphia's University of the Arts' Gallery 1401, Philadelphia, PA; Philadelphia Photo Arts Center and Emory Visual Arts Gallery, Atlanta, GA. Samantha has been published in Flash Forward, SHOTS, Photo+, Aesthetica Magazine, LENS CRATCH, Huffington Post, WIRED and The Photo Review.

Samantha currently is the Assistant Professor of Photography at McNeese State University in Lake Charles, LA.

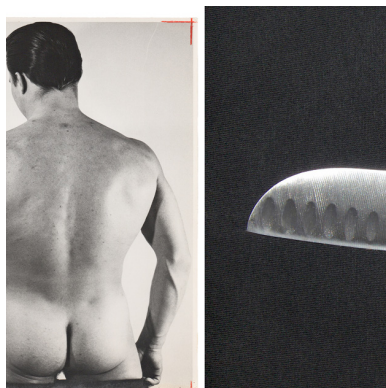


To Pull Back the Skin and Look Beneath, 2016

EMILY VERKAMP

Emily is from Idalou, Texas, and attended Texas Tech University where she received her BFA in photography in 2014. Her work from Texas Tech focused on history, bringing figures from antique tintypes and daguerreotypes into more contemporary settings.

She now attends The University of Texas at San Antonio, where she is working on her MFA in photography. Her most recent work still shows her interest in history through the use of alternative processes. Combining the use of liquid light and lumen prints, Emily uses non-archival darkroom techniques to obtain folded, cracked, and almost skin-like abstract images that she then scans into the computer to create large, detailed prints.



Constructed Realities (Male Back/ Knife), 2016

THOMAS WHITWORTH

Former professor of Fine Arts at the University of New Orleans. Taught at the Herron School of Art, Indianapolis, IN, and University of South Florida, Tampa, FL. MFA from the School of the Art Institute of Chicago, MA from California State University, Fullerton, CA and BFA from Florida State University, Tallahassee, FL.

Numerous one person and group exhibitions over 40 years. Works included in collections of State of Louisiana, Bank of America, Chicago, IL, New Orleans Museum of Art, Museum of Contemporary Photography, Chicago, IL, Sackner Archive of Concrete and Visual Poetry, Miami Beach, FL.

Grants and awards: Louisiana Division of the Arts Individual Artist Fellowship 2005 and 1993, Indiana University/ Purdue University at Indianapolis Grant-in-Aid of Research 1983. University of New Orleans Summer Scholar Award, Juror's Award Tampa Biennate, Artist Alliance Gallery, Tampa, FL.

Lives and works in central Florida.



The Other Side of Time, 2016

MICHAEL YANKOWSKI

Michael Yankowski has been a Professor of Art at Northwestern State University in Natchitoches, Louisiana for 30 years where he teaches photography, design and crafts. He is a former high school teacher, photographer and graphic designer in Doha, Qatar. He Received his Bachelors and Masters Degrees from the University of Wisconsin and an MFA from Louisiana Tech.

In 2000 Yankowski was awarded a Louisiana Artists Endowment and has been a recipient of numerous grants and awards. Exhibiting nationally, his work has been included in many sculpture and photography competitions and the Alexandria Museum of Art and is represented by Carol Robinson Gallery in New Orleans.

His preferred sculptural media is fabricated and carved wood often including cast and fabricated metal and traditional painting as he explores themes of nature, the cosmos and faith.



School of Design
Louisiana Tech University
design.latech.edu